

Installation Guide

3M Command Strip Mounting

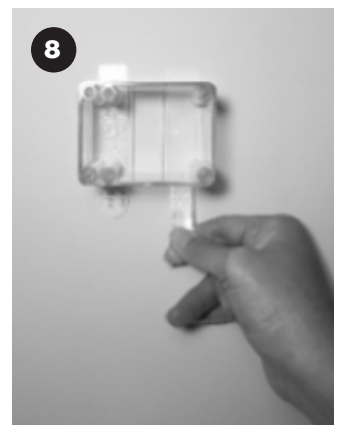
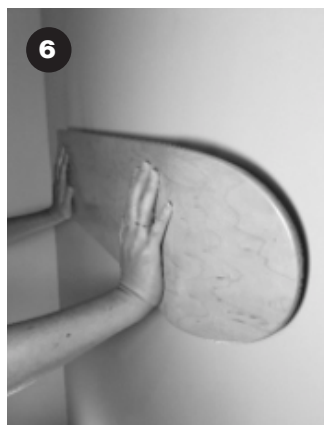
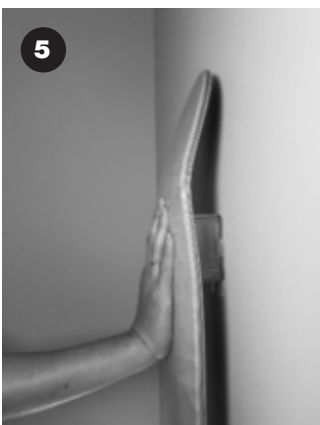
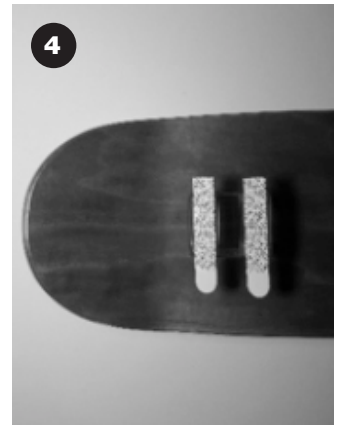
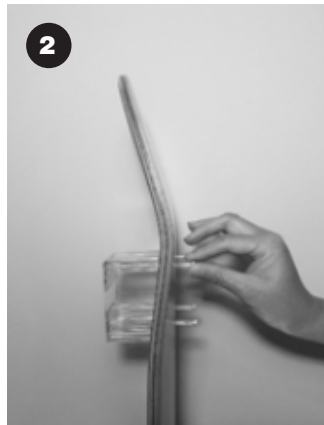
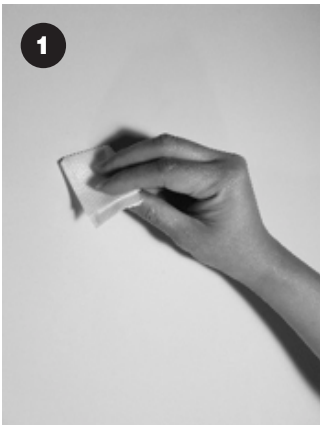
1. Clean surface with isopropyl wipes, wipe gently, let dry (fig. 1).
2. Attach block to skateboard deck by aligning truck holes with block and threading through each of the plastic bolts (4). Tighten until bolt head meets the deck. To avoid breaking the plastic bolts do not over-tighten (fig. 2).
3. Attach two 3M Command Strips vertically to the block by removing the backing from each strip and pressing against the base of the block with the tabs at the bottom (fig. 3, 4).
4. Remove the remaining backing from the 3M Command strips. Align carefully and press the board and block against the wall. Press and hold for 60 seconds (fig. 5, 6).

Removal:

Unscrew the 4 bolts to detach deck from block (fig. 7). Hold block against the wall and pull the strip tab downward until it releases (fig. 8). Repeat for the second strip.

Note:

- For vertical or diagonal mounting use one block per board. For horizontal mounting use two blocks per board.
- If your board has a large tail or nose and touches the wall turn the plastic bolts anti-clockwise and move the deck away from the wall.
- Phillips Head screwdriver required for fastening plastic bolts.



Installation Guide

3M Command Strip Mounting

Safety Instructions:

- Do not use with wallpaper or vinyl surfaces.
- Wait a minimum of 28 days after painting to apply.
- Adhesive could lose adhesion above 40°C.
- Do not mount decks over beds.

Installation Guide

Screw & Plug Mounting

1. Place the block against the wall and use the holes in the base of the block to mark the plug holes with a pencil (fig. 1).
2. Align mounting plugs (2) with wall pencil marks and screw into wall with a Phillips head screwdriver until flush with wall (fig. 2, 3).
3. Align the block base with the plugs. Screw the metal screws (2) into the plugs until secure (fig. 4, 5).
4. Hold the skateboard deck against the mounted block. Align the truck holes with the block and thread through each of the plastic bolts. Tighten until bolt head meets the deck (fig. 6). To avoid breaking the plastic bolts do not over-tighten.

Removal:

To remove from the wall reverse steps 2,3 and 4. To separate the plug from the metal screw, hold the plug with pliers and turn the metal screw anti-clockwise.

Note:

- For vertical, diagonal or horizontal mounting use one block per board.
- Phillips Head screwdriver required for fastening plastic bolts and wall plugs.
- Plug and Screw mounting requires plaster wall thickness of minimum 3.5cm (1.5 inches).

